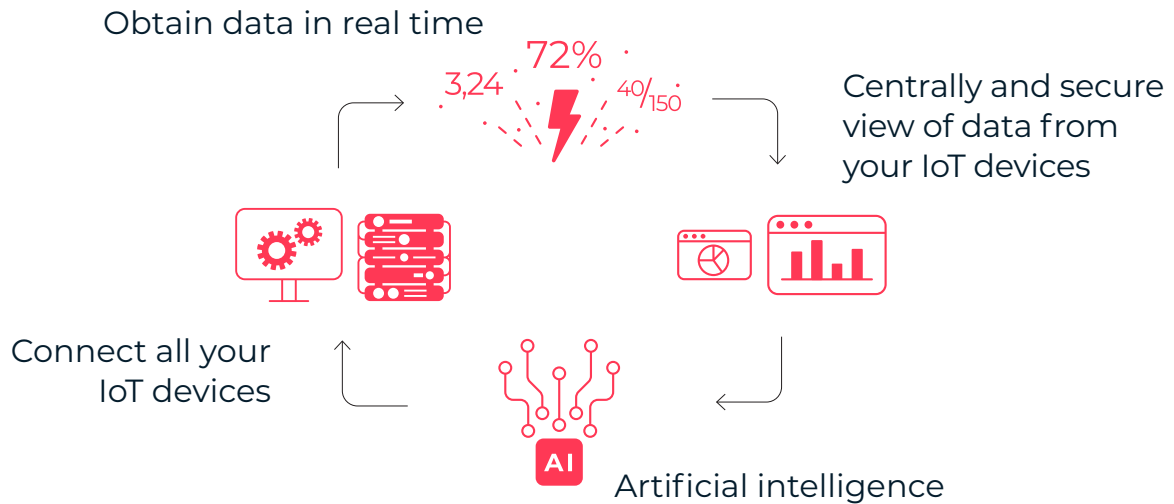


# smart concepts

powered by Plain Concepts

Smart Concepts is a **cloud solution** with an implementation time of less than 7 days, designed to integrate and communicate with a variety of **IoT devices** quickly and securely, and enhance the value of data through **Artificial Intelligence**.



Identify trends and forecast based on **real-time** and **historical** IoT data.

## BENEFITS

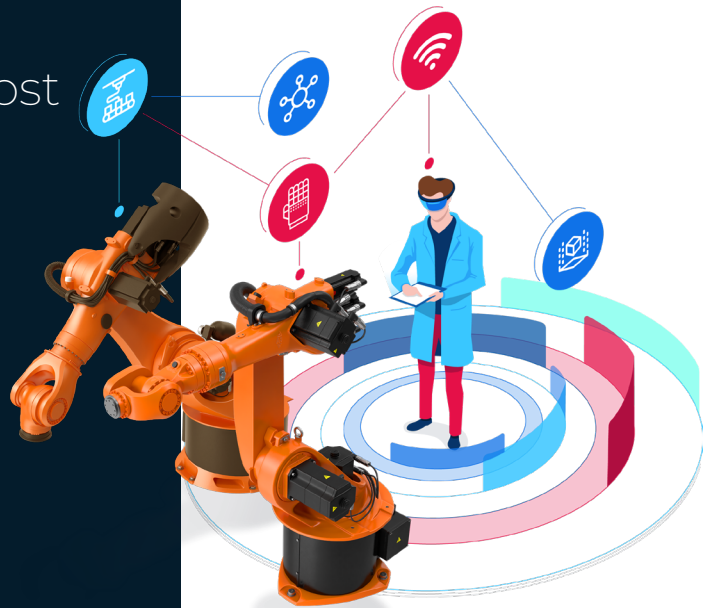
- Easy to build, use and manage.
- Development of Artificial Intelligence scenarios.
- Customizable and easy to integrate with other systems.
- Azure managed services including ISO certifications.
- Implement visualization tools that enable you to obtain Insights from high data volumes in a matter of minutes.



- Maximum security and reliability in the communication between IoT applications.
- Provides a powerful information base for the creation of Digital Twin.
- Get the benefits of a cloud platform.
- Increased plant efficiency (OEE).

## Smart Concepts

performs even in the most demanding scenarios, handling large volumes of signal processing. effortlessly

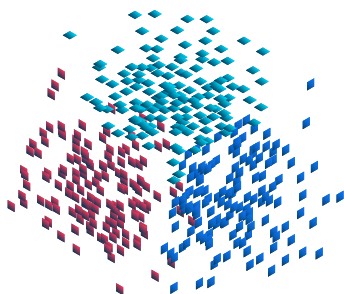


### WHY SMART CONCEPTS?

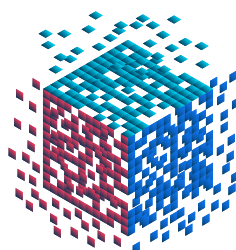
- Gain more control over the information available in your organization.
- Manage your devices remotely and in real-time.
- Improve the quality of your processes and optimize your production.
- Reduce the time spent of mundane, repetitive tasks, and focus your employees' experiences on high-value work.
- Reduces time to market in processes related to industry 4.0.

Increase the potential of your data  
with Smart Concepts,  
and obtain insights in minutes

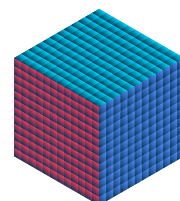
BIG DATA



ANALYTICS



INNOVATIVE  
DECISIONS



## KEY FEATURES



### IoT Ready

Connect and manage your IoT devices from the cloud and establish two-way communication with billions of IoT devices.



### Batch process and real time

Access operational IoT scenarios with support for real-time data loading scenarios.



### Performance

View and manage billions of data events from your IoT devices without sacrificing performance.



### Easy interaction of the systems

Integration with third-party software is fast and requires minimal effort.



### Scalable and secure

Benefit from maximum security across a wide variety of devices and from a scalable infrastructure, which will increase the flexibility of your business through pay-per-use services.



### Anomaly detection and predictive maintenance

Optimize your operations and maintenance of production processes by detecting abnormal patterns.



### Efficient display of IoT data

Gain insights into your data through ad-hoc visualization analysis (menu, properties, etc.).

## NATIONAL AND INTERNATIONAL COMPANIES RELY ON SMART CONCEPTS



## DO YOU WANT TO KNOW MORE?

Contact us at [info@smartconcepts.es](mailto:info@smartconcepts.es)  
or visit [www.smartconcepts.es](http://www.smartconcepts.es)

